

Toyota Electric E-Locker Motor Guard

(SKU# TDI-ELMG)

Installation Instructions



CAUTION: Safety glasses should be worn at all times when working with vehicles and related tools and equipment.



Suggested Tools:

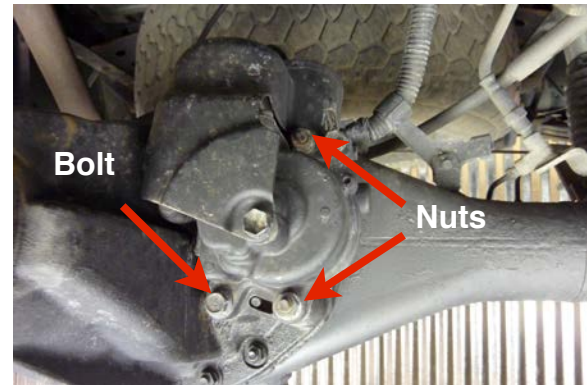
- 12 mm Socket
- Ratchet
- Extension
- Hacksaw
- Permanent Marker (White)
- Bench Vice
- File



Step 1

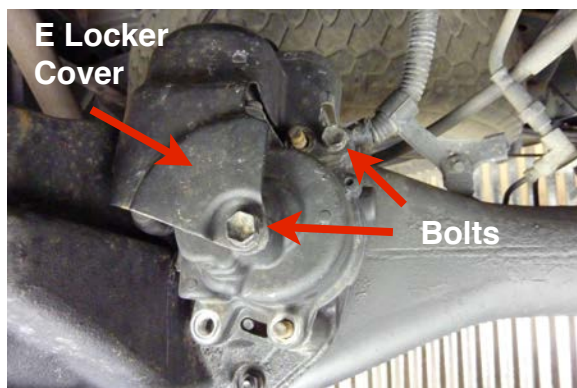
Safely position the vehicle on a twin post lift.

Note: We did this job on a twin post lift but it could easily be done with a floor jack and jack stands or it could be done without lifting the vehicle at all.



Step 2

Remove the E-Locker fasteners (two nuts and one bolt) using a 12 mm socket.



Step 3

Remove the E-Locker cover by removing the fasteners (two bolts) using a 12 mm socket.

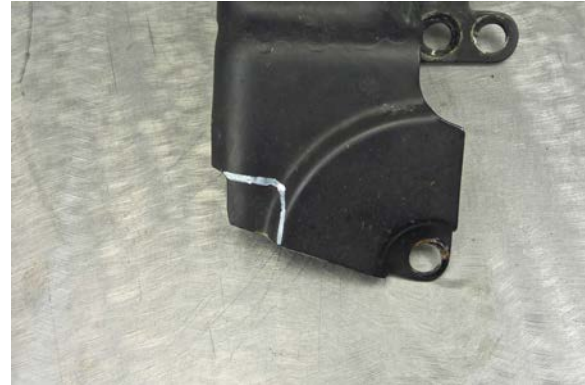


E Locker Cover Modification



Step 4

Mark the cover as shown.



Step 4 Continued

Cover shown properly marked.



Step 5

Secure the cover in a vice and cut along the marks using a hacksaw (or cut off wheel).



Step 5 Continued

E Locker cover properly cut.





Step 6

Smooth the rough edgers with a file.

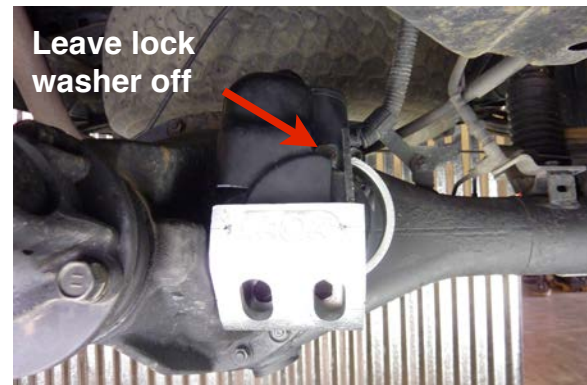
Note: We also recommend painting the exposed metal to reduce the risk of rust.

E Locker Guard Installation



Step 7

Reinstall the E-Locker cover and snug the (2) attaching bolts.



Step 8

Install the E-Locker guard and tighten the (3) fasteners to 20 ft. Lbs.

Note: The lock washer that was fitted behind the top nut will likely not fit and should be let off.



As always, If you experience any difficulty during the installation of this product please contact Low Range Off-Road Technical Support at 801-805-6644 M-F 8am-5pm MST. Thank you for purchasing from Low Range Off-Road.



These instructions are designed as a general installation guide. Installation of many Low Range Off-Road products require specialized skills such as metal fabrication, welding and mechanical trouble shooting. If you have any questions or are unsure about how to proceed, please contact our shop at 801-805-6644 or seek help from a competent fabricator. Using fabrication tools such as welders, torches and grinders can cause serious bodily harm and death. Please operate equipment carefully and observe proper safety procedures.

Rock crawling and off-road driving are inherently dangerous activities. Some modifications will adversely affect the on-road handling characteristics of your vehicle. All products sold by Low Range Off-Road are sold for off road use only. Any other use or application is the responsibility of the purchaser and/or user. Some modifications and installation of certain aftermarket parts may under certain circumstances void your original dealer warranty. Modification of your vehicle may create dangerous conditions, which could cause roll-overs resulting in serious bodily injury or death. Buyers and users of these products hereby expressly assume all risks associated with any such modifications and use.

Revised 12/06/12© Copyright 2012 Low Range Off-Road, LC All Rights Reserved

