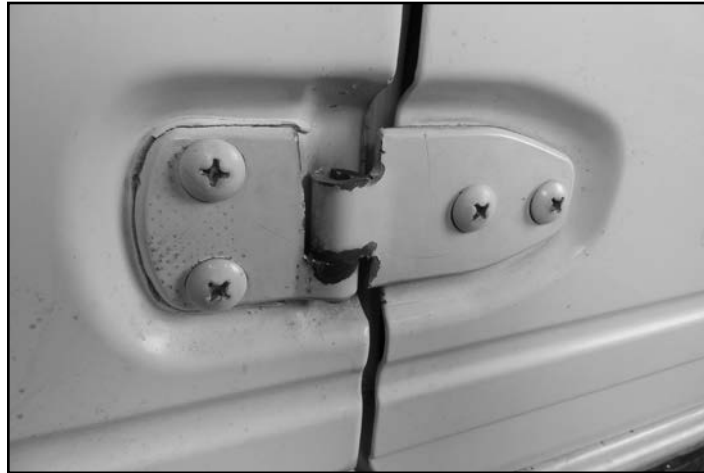


Suzuki Samurai Removable Door Hinge Modification

Modification Instructions



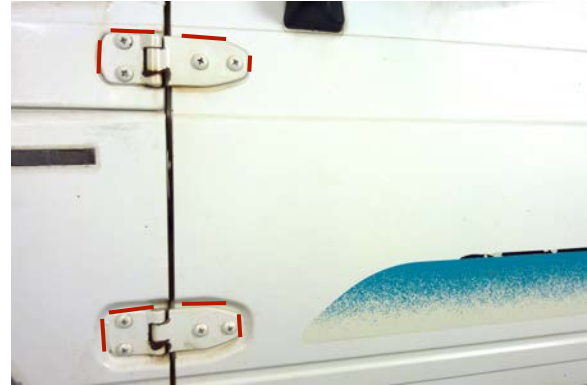
CAUTION: Safety glasses should be worn at all times when working with vehicles and related tools and equipment.



Suggested Tools:

- Pencil
- Phillips Screwdriver
- Impact Driver (with phillips socket)
- Large Hammer
- Bench Vice
- Hack Saw
- Felt-tipped Permanent Marker
- Flat File
- Grease

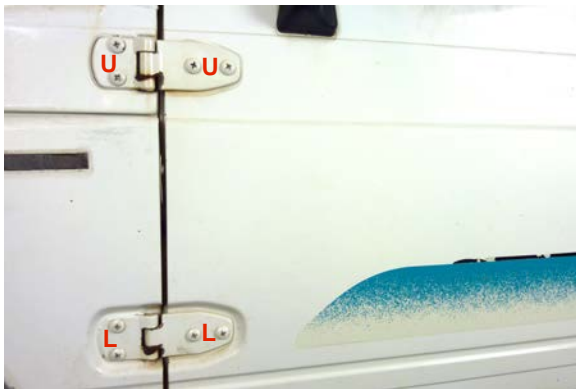
Door Strap



Step 1

Disconnect the door strap from the door by removing (2) phillips screws.

Note: This picture shows the door panel removed, but removing the door panel for this procedure is not necessary.



Step 2

Samurai hinges allow for some adjustment when the attaching screws are loosened. We recommend you mark the original hinge-to-body relationships with a pencil so that the hinges can be reinstalled in their original position. This will make final door adjustment easier. Note: Red lines indicate where to make pencil marks.



Step 3

Samurai hinges are not interchangeable. The upper hinge is different from the lower. We recommend you mark the upper hinge with a "U" and the lower hinge with an "L" so that the hinges can be reinstalled in their original position. A pencil or any non-permanent marker will do.

Note: Red letters indicate how and where to mark the hinges.

Step 4

Loosen the (4) lower hinge screws with an impact driver. Click [HERE](#) to see a video on how to use an impact driver if you are not familiar with this tool. These screws are very difficult (if not impossible) to remove with a normal phillips screwdriver.



Step 5

Remove the lower door hinge by removing (4) phillips screws.

Note: Thin metal washers are sometimes used between the hinge and the door. If washers are used, set them aside to be reused in the same location when hinges are reinstalled.



Step 6

Loosen the (4) upper hinge screws with an impact driver.



Step 7

Remove the upper door hinge by removing (4) phillips screws.

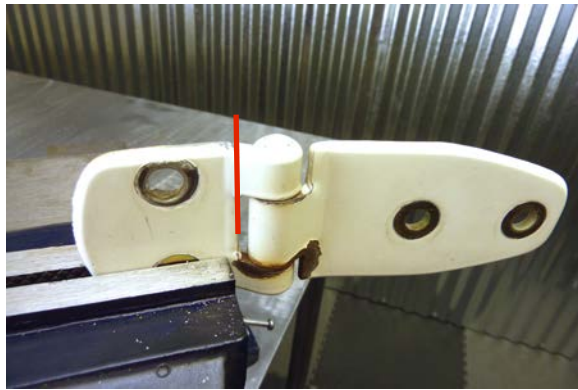


Step 8

Remove the door and set it aside.



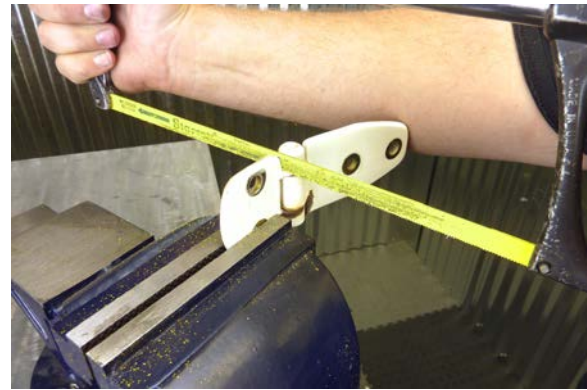
Hinge Modification Procedure



Step 9

Place a hinge in a vice as shown. Mark where the cut is to be made with a pencil. The red line shows where to mark the hinge.

Note: Be sure the hinge is positioned the same way as it was on the vehicle.



Step 10

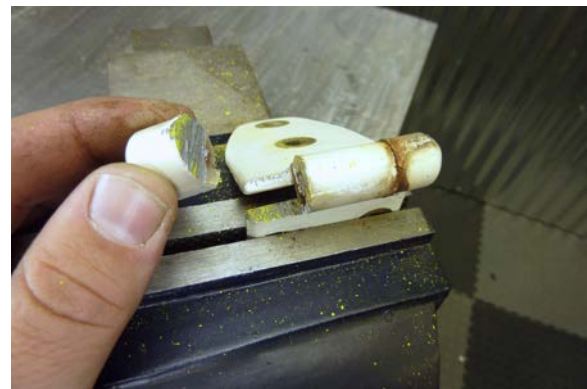
Cut the hinge as shown with a hacksaw following the pencil mark.



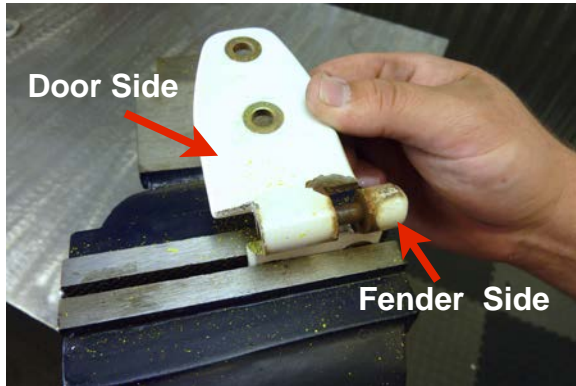
Step 11

Cut the hinge pin as shown with a hacksaw.

Note: Let the saw follow the seam between the door and fender side of the hinge.



Hinge pin after being cut.



Step 12

Separate the door side from the fender side of the hinge.



Step 13

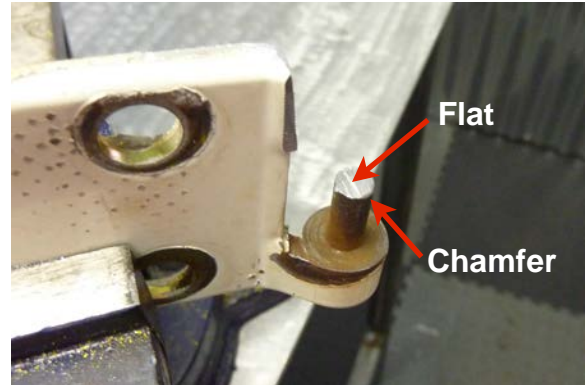
Measure and mark the hinge pin as shown.

Note: Mark the pin 5/8" from the base of the hinge.



Step 14

Cut the hinge pin with a hacksaw at the mark made in the previous step.



Step 15

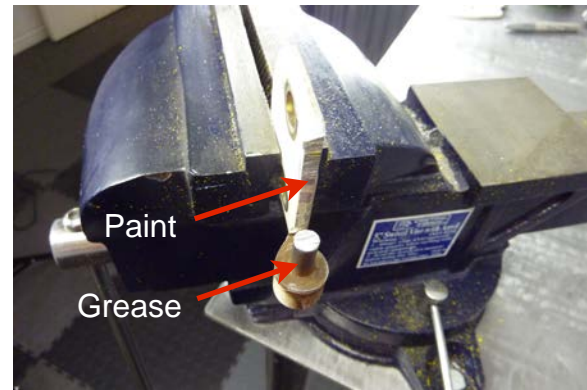
File the pin flat on the top and a small chamfer on the edges as shown.





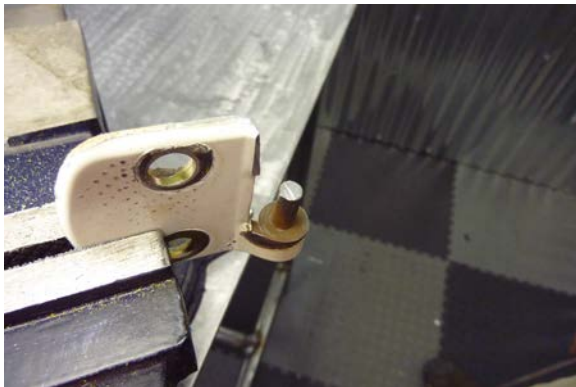
Step 16

Smooth with a file to remove saw marks and sharp edges.



Step 17

We recommend that you paint all exposed surfaces (except for the hinge pin) to reduce rust and improve appearance. The hinge pin should be lubricated with grease or oil.



Step 18

Repeat **Steps 9** through **17** on the other door hinge.



Step 19

Install the upper and lower fender side hinges as close to their original position as possible.

Note: Use the pencil marks as a reference to assist in positioning.



Step 20

Install the upper and lower door side of hinges as close to their original position as possible.

Note: Don't forget the washers between the hinge and the door if they were used originally.



Step 21

Hold the door in the open position at about a 45° degree angle. Then align the door hinges with the hinge pins and drop the door into place.

Caution: Be careful during door removal and replacement. The fender paint is easily scratched and damaged during this procedure.



Step 22

Close the door and check for proper fit and door latch operation.

Note: You may need to loosen the hinge screws, adjust the door and/or hinges to attain a proper fit. Be sure to tighten the screws once the door works properly.



Step 23

Reconnect the door strap. See our web site for quick release door straps that can make door removal and replacement easier. ([SKU# SIB-QRD](#))

Note: This picture shows the door panel removed, but removing the door panel is not necessary for this procedure.



As always, If you experience any difficulty during this procedure, please contact Low Range Off-Road Technical Support at 801-805-6644 M-F 8am-5pm MST. Thank you for allowing us to assist you.



These instructions are designed as a general installation guide. Installation of many Low Range Off-Road require specialized skills such as metal fabrication, welding and mechanical trouble shooting. If you have any questions or are unsure about how to proceed, please contact our shop at 801-805-6644 or seek help from a competent fabricator. Using fabrication tools such as welders, torches and grinders can cause serious bodily harm and death. Please operate equipment carefully and observe proper safety procedures.

Rock crawling and off-road driving are inherently dangerous activities. Some modifications will adversely affect the on-road handling characteristics of your vehicle. All products sold by Low Range Off-Road are sold for off road use only. Any other use or application is the responsibility of the purchaser and/or user. Some modifications and installation of certain aftermarket parts may under certain circumstances void your original dealer warranty. Modification of your vehicle may create dangerous conditions, which could cause roll-overs resulting in serious bodily injury or death. Buyers and users of these products hereby expressly assume all risks associated with any such modifications and use.

Revised 08/07/12 © Copyright 2012 Low Range Off-Road, LC All Rights Reserved