

Suzuki Samurai Door Hinge Installation

(SKU# SEB-DHK)

Installation Instructions



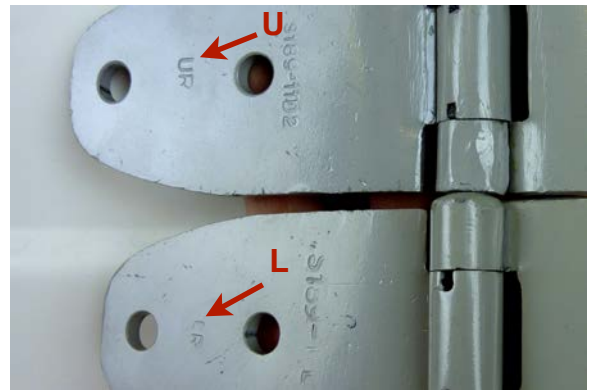
Kit sold with or without hardware

CAUTION: Safety glasses should be worn at all times when working with vehicles and related tools and equipment.



Suggested Tools:

- Impact Driver (with #3 phillips bit)
- Large Hammer



Tech Tip 1

This procedure is best accomplished by keeping the door closed. This maintains the current door positioning and will make the final door adjustment easier.

Tech Tip 2

The upper and lower replacement hinges are not interchangeable. The upper hinge is marked with a "U" and the lower hinge with an "L" to assist you in correct installation.



Tech Tip 3 Optional

These hinges are primed only. They can be used as is or painted the color of your choice.

Step 1

Loosen the (4) lower hinge screws with an impact driver. Click [HERE](#) to see a video on how to use an impact driver if you are not familiar with this tool. This tool can be purchased on our website.





Caution

Thin metal washers are sometimes used by Suzuki between the door and the hinge. If washers are used, make sure to note their exact location so they can be reinstalled with the new hinge.



Step 2

Remove the lower door hinge by removing (4) phillips screws.

Note: If the screws are rusted or damaged in any way we recommend replacing them.



Caution:

Be sure to install the washers in their original location on the new hinge **IF** they were removed earlier.



Step 3

Install the new hinge and lightly snug the screws.

Note: If the latch side of the door has dropped down reducing the gap shown here, you will want to lift it back up again. Once the door is positioned properly, tighten down the screws.



Step 4

Repeat Steps 1 through 3 on the upper hinge.



Step 5

Check the door for proper fit and the latch for proper operation.

Note: It may be necessary to loosen the hinge screws slightly and adjust the door positioning. Be sure to retighten all the screws once the door is adjusted and functioning properly.





As always, If you experience any difficulty during the installation of this product please contact Low Range Off-Road Technical Support at 801-805-6644 M-F 8am-5pm MST. Thank you for purchasing from Low Range Off-Road.



These instructions are designed as a general installation guide. Installation of many Low Range Off-Road require specialized skills such as metal fabrication, welding and mechanical trouble shooting. If you have any questions or are unsure about how to proceed, please contact our shop at 801-805-6644 or seek help from a competent fabricator. Using fabrication tools such as welders, torches and grinders can cause serious bodily harm and death. Please operate equipment carefully and observe proper safety procedures.

Rock crawling and off-road driving are inherently dangerous activities. Some modifications will adversely affect the on-road handling characteristics of your vehicle. All products sold by Low Range Off-Road are sold for off road use only. Any other use or application is the responsibility of the purchaser and/or user. Some modifications and installation of certain aftermarket parts may under certain circumstances void your original dealer warranty. Modification of your vehicle may create dangerous conditions, which could cause roll-overs resulting in serious bodily injury or death. Buyers and users of these products hereby expressly assume all risks associated with any such modifications and use.

Revised 06/21/12 © Copyright 2012 Low Range Off-Road, LC All Rights Reserved

