

Instructions Created by an:



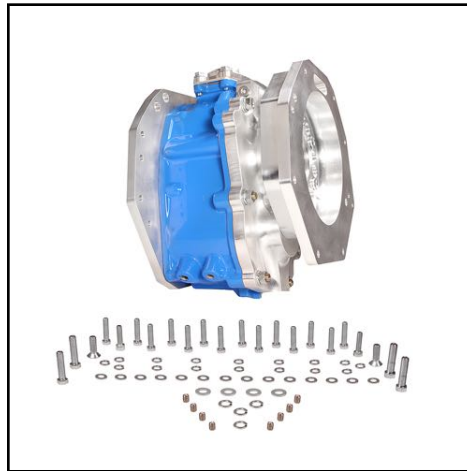
Automotive  
Service  
Excellence

MASTER AUTO TECHNICIAN



## Taco Box Clocking (SKU# TCASE-IW-600-03)

### Instructions



**CAUTION:** Safety glasses should be worn at all times when working with vehicles and related tools and equipment.



#### Suggested Tools:

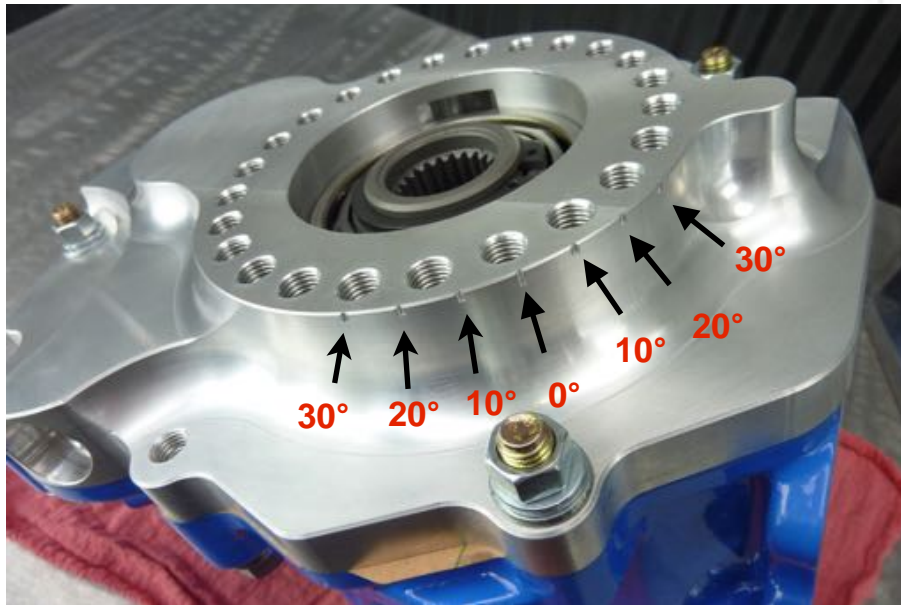
- Permatex Gear Oil RTV Gasket Maker (or equivalent)
- 8 mm socket and ratchet.
- Brake Parts Cleaner
- Torque Wrench
- Permatex® Threadlock - Blue



**FOR ADDITIONAL COPIES OF THESE  
AND OTHER INSTRUCTIONS GO TO:**

[www.lowrangeoffroad](http://www.lowrangeoffroad) and click on the  
"INSTRUCTIONS" tab.





## Tech Tip 1A

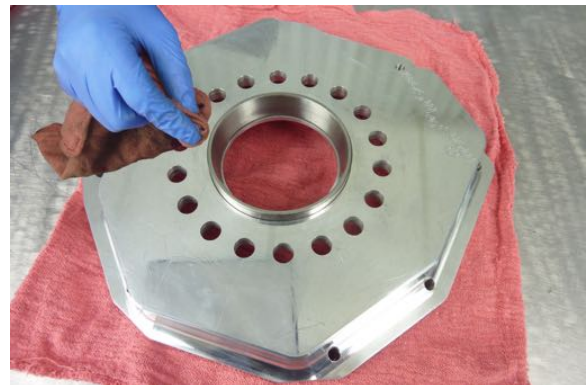
To help orient the dual case adapter with the transfer case adapter there are alignment marks cast into each component. This picture shows the alignment marks on the dual case adapter. They are in 10° increments to accommodate a wide range of applications.



## Tech Tip 1B

This picture shows the **SINGLE** alignment mark on the transfer case adapter. This mark can be positioned on each of the degree marks on the dual case. This mark can also be aligned halfway between each of the degree marks (5° increments) for an even wider range of positions if needed.

## Installing the Transfer Case Adapter

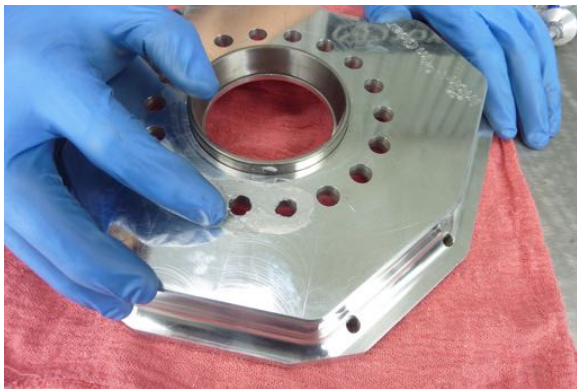


### Step 1

Place the transfer case adapter on the work bench as shown.

### Step 2

Clean the area around the bolt holes with a good quality degreaser such as Brake Clean.



### Step 3

Apply a thin coat of Permatex Gear Oil RTV Gasket Maker (or equivalent) as shown.

### Tech Tip 3

Apply gasket maker in the area between the red circles.



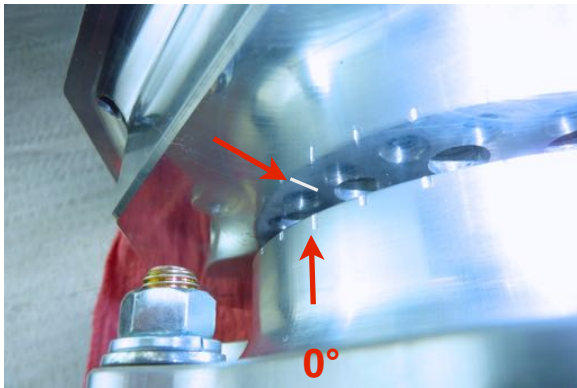
## Step 4

Place the dual case on the work bench as shown.



## Step 5

Turn the transfer case adapter over and install it on the dual case making sure the alignment marks are aligned as shown in the NEXT picture.



## Step 6

Alignment marks positioned on 0°.

Note: We used the 0° mark for our application. But you can use any one of 13 different positions (5° increments) that best fits your application. See Tech Tip 1A and 1B.



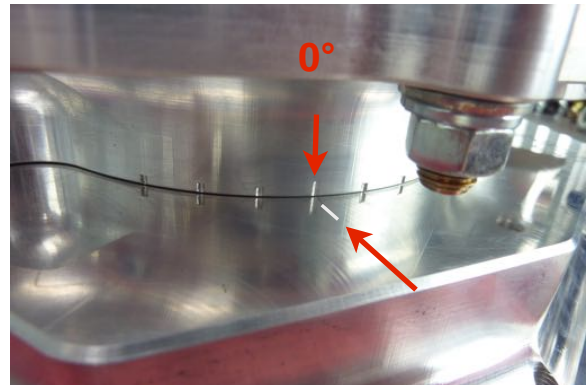
## Step 7

Insure that the transfer case adapter and the dual case adapter are going together evenly. This is a very snug fit. If you attempt to put these two parts together using excessive force, damage could result.



## Step 8

It may be necessary to turn the assembly over and push down on the dual case to have these two pieces go together.



## Tech Tip 8

This shows the transfer case adapter and the dual case adapter properly fitted together and the marks aligned.



## Step 9

Apply Blue Permatex® Threadlock to the threads of one of the M10X1.25X25 allen head bolts.



## Step 10

Install the bolt in one of the holes that are aligned properly.

Note: It may be necessary to **SLIGHTLY** rotate the transfer case adapter to align the holes.



## Step 11

Install the remaining five bolts as shown in steps 9 and 10 and torque all (6) bolts in a progressively tighter criss-cross pattern using an 8mm allen socket until 29 ft. lbs. is reached.



## Congratulations!

All done. We hope these instructions were helpful. If you have suggestions on how we can improve our instructions (or products) please email us at [sales@inchwormgear.com](mailto:sales@inchwormgear.com)

As always, If you experience any difficulty during the installation of this product please contact Inchworm Gear Technical Support at 530-677-8111 during working hours. Thank you for purchasing from Inchworm Gear.



These instructions are designed as a general installation guide. Installation of many Inchworm Gear products require specialized skills such as metal fabrication, welding and mechanical trouble shooting. If you have any questions or are unsure about how to proceed, please contact our shop at 801-805-6644 or seek help from a competent fabricator. Using fabrication tools such as welders, torches and grinders can cause serious bodily harm and death. Please operate equipment carefully and observe proper safety procedures.

Rock crawling and off-road driving are inherently dangerous activities. Some modifications will adversely affect the on-road handling characteristics of your vehicle. All products sold by Inchworm Gear are sold for off road use only. Any other use or application is the responsibility of the purchaser and/or user. Some modifications and installation of certain aftermarket parts may under certain circumstances void your original dealer warranty. Modification of your vehicle may create dangerous conditions, which could cause roll-overs resulting in serious bodily injury or death. Buyers and users of these products hereby expressly assume all risks associated with any such modifications and use.

Revised 11/04/14© Copyright 2014 Low Range Off-Road, LC All Rights Reserved