

Instructions Created by an:



**Automotive
Service
Excellence**
MASTER AUTO TECHNICIAN



Suzuki Samurai Overhead Storage Tray (SKU# SIB-OHT)

Installation Instructions



CAUTION: Safety glasses should be worn at all times when working with vehicles and related tools and equipment.



**FOR ADDITIONAL COPIES OF THESE
AND OTHER INSTRUCTIONS GO TO:**
www.lowrangeoffroad.com and click on the
"INSTRUCTIONS" tab.

Suggested Tools:

- Hand Drill
- 7/64" Drill Bit
- Impact Drill
- Impact Drill to Socket Adapter
- 8mm Socket
- Felt Tipped Marker (White)
- Knife (Utility or Pocket)



Step 1

Position the overhead tray on the bars.



Step 2

Driver side tray positioning.



Step 3

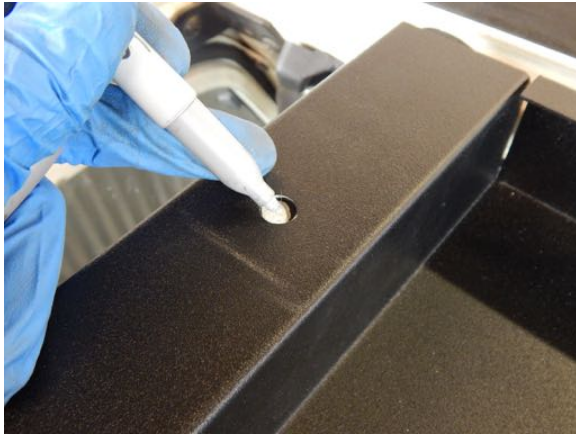
Slide the tray all the way forward until it touches the windshield.

Note: You may chose to move the tray rearward just a bit (1/4" to 1/2") and that is okay.



Step 4

Mark the padding that is to be cut out in preparation for drilling the hole on the passenger side.



Step 5

Mark the padding on the driver side.



Step 6

Remove the tray.



Step 7

Cut away the padding using a pocket (or utility) knife. See Next Tech Tip.



Tech Tip 7

This shows the padding cut away.

Note: 3/8" by 3/8" square should be enough.



Step 8

Cut out the driver side pad.



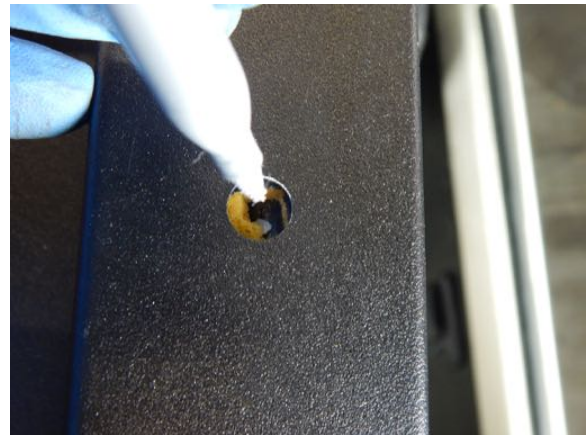
Step 9

Reposition the overhead tray back on the bars.



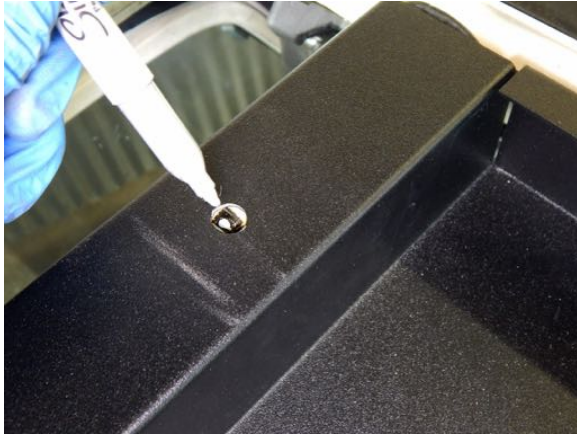
Step 10

Make sure the hole in the tray aligns with the hole in the pad on both sides.



Step 11

Mark the center of the hole to be drilled in the bar using a felt tipped marker on the passenger side.



Step 12

Mark the center of the hole on the driver side.



Step 13

Remove the tray.



Step 14

Drill a hole in the bar using a 7/64" drill bit.



Tech Tip 14

These are the screws supplied with the tray. They are self drilling and could be used without pilot drilling a hole with a drill bit. However, we find it easier and more accurate to drill a pilot hole with a drill bit first, then install the screw.



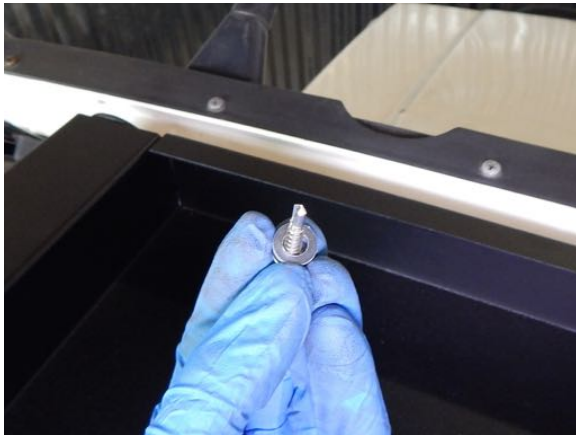
Step 15

Drill the same size hole in the passenger side bar.



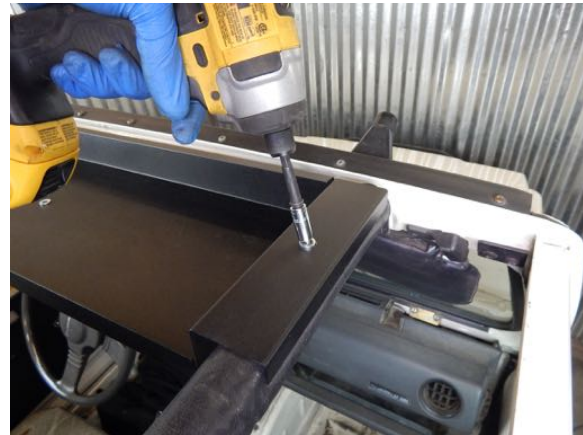
Step 16

Reposition the tray insuring that the tray, pad and drilled holes are aligned on both sides of the vehicle.



Step 17

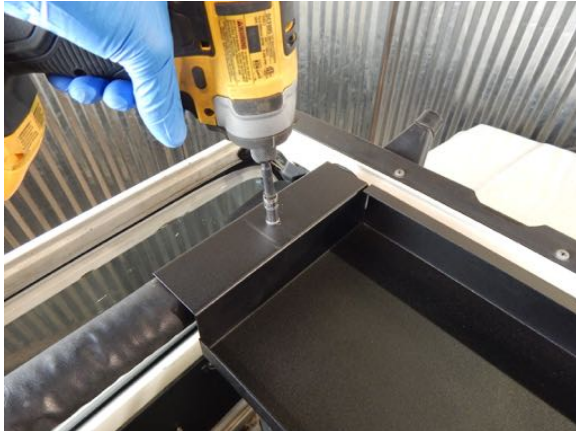
Place a washer on the screw.



Step 18

Install the passenger side screw using and impact drill and an 8mm socket.

Note: This could be done with a ratchet if you do not have an impact drill.



Step 19

Install the driver side screw and washer.



Step 20

Now sit back and admire your work for a moment and then fill the tray with your stuff.



Congratulations!

You have successfully installed the overhead storage tray. We hope these instructions have been helpful. If you have suggestions on how to make these instructions (or products) better, please email us at: sales@lowrangeoffroad.com



As always, If you experience any difficulty during the installation of this product please contact Low Range Off-Road Technical Support at 801-805-6644 M-F during regular store hours. Thank you for purchasing from Low Range Off-Road.



These instructions are designed as a general installation guide. Installation of many Low Range Off-Road products require specialized skills such as metal fabrication, welding and mechanical trouble shooting. If you have any questions or are unsure about how to proceed, please contact our shop at 801-805-6644 or seek help from a competent fabricator. Using fabrication tools such as welders, torches and grinders can cause serious bodily harm and death. Please operate equipment carefully and observe proper safety procedures.

Rock crawling and off-road driving are inherently dangerous activities. Some modifications will adversely affect the on-road handling characteristics of your vehicle. All products sold by Low Range Off-Road are sold for off road use only. Any other use or application is the responsibility of the purchaser and/or user. Some modifications and installation of certain aftermarket parts may under certain circumstances void your original dealer warranty. Modification of your vehicle may create dangerous conditions, which could cause roll-overs resulting in serious bodily injury or death. Buyers and users of these products hereby expressly assume all risks associated with any such modifications and use.

Revised 03/09/16© Copyright 2016 Low Range Off-Road, LC All Rights Reserved

